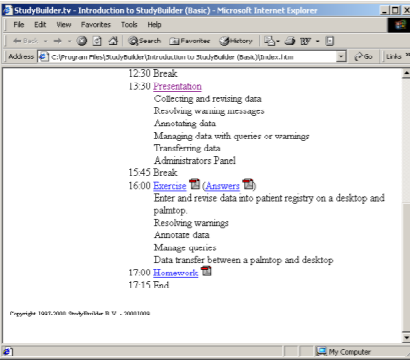
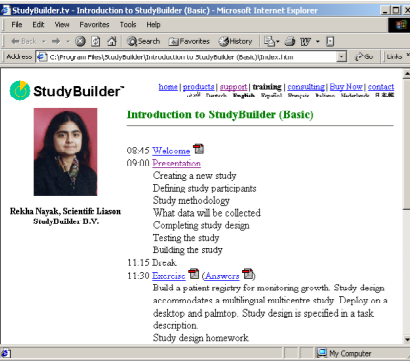


# A multimedia guide to using StudyBuilder tools for study design, data collection and management

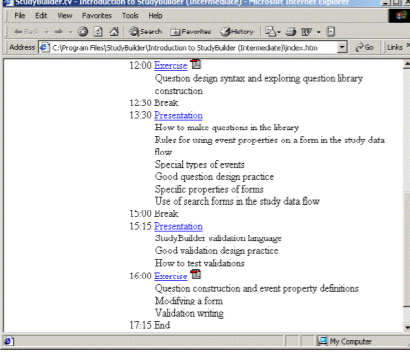
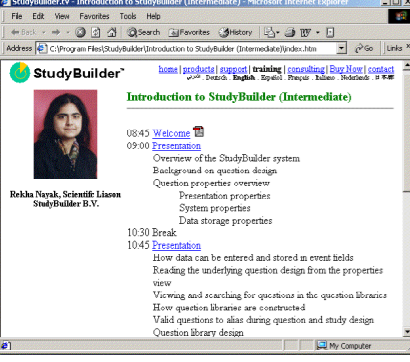
This three part multimedia course gives you a comprehensive grounding in the use of the unique StudyBuilder range of study design, data collection and management products.

The introduction to StudyBuilder Field Edition module has been created for data entry staff, data managers and system administrators who will use StudyBuilder Field Edition to collect and manage data in the field. The module consists of a session aimed at data entry staff and a session aimed at data managers and administrators.

The basic module is aimed at new users of StudyBuilder Professional Edition or StudyBuilder Enterprise Edition explains the principles behind StudyBuilder design tools and how to use them to design studies in practice. Consisting of a morning study design session and an afternoon data entry and data management session, this module gives pupils a thorough grounding in the use of StudyBuilder tools.



The intermediate course is designed to give users who are familiar with the basics of StudyBuilder design tools a thorough grounding of the details of designing new forms and questionnaires. Topics include designing Case Report Forms, configuring patient diaries (both paper and electronic) and using industry standard forms such as FDA format Serious Adverse Event forms.

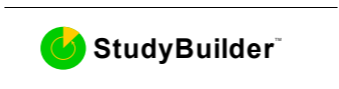


- System Requirements**  
 StudyBuilder Training CD ROM  
 - Microsoft® Windows® 95/98/2000/ME/NT  
 - Pentium 200 MHz or better CPU  
 - at least 32 MB of free RAM  
 - 50-200 MB free disk space  
 - CD-ROM  
 - SVGA or higher monitor  
 - Sound card  
 - Microsoft Internet Explorer 5.5 with Windows Media Player (included)

**Screenshot showing session topics covered by the field module.**  
 Module duration:  
 Approximately 4.5 hours

**Screenshots showing session topics covered by the basic module.**  
 Module duration:  
 Approximately 9.0 hours

**Screenshots showing session topics covered by the intermediate module.**  
 Module duration:  
 Approximately 9.0 hours



For Microsoft Windows 95/98/2000/ME/NT

## INTERACTIVE MULTIMEDIA COURSE

## THE COMPLETE INTRODUCTION TO

# StudyBuilder TRAINING COURSE

## THE COMPLETE StudyBuilder TRAINING COURSE

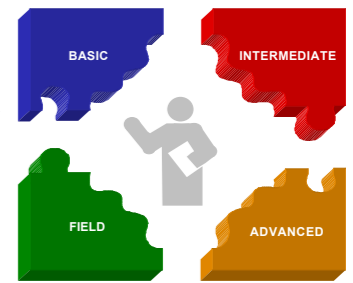
## JOHNSON + NAYAK



The data collection tool for medical research

## MICHAEL J. JOHNSON + REKHA R. NAYAK

- ▶ 16+ hours of expert audio, digital videos, animations and 100+ questions with expert answers and homework covering every key aspect of study design, data collection and management with StudyBuilder software!
- ▶ Comprehensive coverage of study wizards, question libraries, user administration, data transfers, data monitoring, and much more
- ▶ Includes the definitive manual **Inside StudyBuilder**, in print and on CD-ROM!



© 2000-2001 StudyBuilder B.V. All rights reserved. StudyBuilder and the StudyBuilder wordmark are registered trademarks or trademarks of StudyBuilder B.V. in the Benelux and other jurisdictions.

	ex.VAT	inc.VAT
EU (ex. UK)	€499	€586.33
Japan	¥59,000	¥69,325
UK	£299	£351.33
USA	\$499	\$586.33

